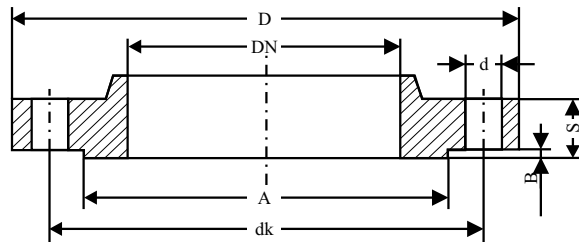


# DIMENSIONES Y PERFORADO DE BRIDAS

## Normas internacionales (para PN 10 / serie 150)



D x dk x n x d  
S x A x B



n: Cantidad de agujeros.

▲Bridas planas, sin resalte ni mamelón.

	D. N. [Pulg.]	DIN 2501 DIN 2532	ISO 2531 OSN 1987	ANSI 16.5	AWWA Clase D ▲	N.F. E29-282	B.S. tabla H ▲
30	1¼	140x100x4x18 16x68x2		118x89x4x16 16x64x1,6		140x100x4x18 18x78x2	133x98x4x18 18xx--
40	1½	150x110x4x18 18x88x3	150x110x4x19 19x84x3	127x98x4x16 18x73x1,6	127x99x4x16 11xx--	150x110x4x18 18x88x3	140x105x4x18 18xx--
50	2	165x125x4x18 20x102x3	165x125x4x19 19x99x3	152x121x4x19 19x92x1,6	152x121x4x19 13xx--	165x125x4x18 20x102x3	165x127x4x18 19xx--
65	2½	185x145x4x18 22x122x3	185x145x4x19 19x118x3	178x140x4x19 22x105x1,6	178x140x4x19 14xx--	185x145x4x18 20x122x3	184x146x8x18 19xx--
80	3	200x160x8x18 22x138x3	200x160x8x19 19x132x3	191x152x4x19 24x127x1,6	190x152x4x19 14xx--	200x160x4x18 22x138x3	203x165x8x18 22xx--
(90)	3½	210x170x8x18 22x148x3	----	216x178x8x19 24x140x1,6	----	210x170x8x18 22x148x3	216x178x8x18 22xx--
100	4	220x180x8x18 24x158x3	220x180x8x19 19x156x3	229x191x8x19 24x157x1,6	229x191x8x19 16xx--	220x180x8x18 22x158x3	229x191x8x18 25xx--
125	5	250x210x8x18 26x188x3	250x210x8x19 19x184x3	254x216x8x22 24x186x1,6	254x216x8x22 16xx--	250x210x8x18 24x188x3	279x235x8x22 29xx--
150	6	285x240x8x22 26x212x3	285x240x8x23 19x211x3	279x241x8x22 25x216x1,6	279x241x8x22 17xx--	285x240x8x22 24x212x3	305x260x12x22 29xx--
(175)	---	315x270x8x22 26x242x3	----	----	----	315x270x8x22 26x242x3	337x292x12x22 32xx--
200	8	340x295x8x22 26x295x3	340x295x8x23 20x266x3	343x298x8x22 29x270x1,6	343x298x8x22 17xx--	340x295x8x22 26x268x3	368x324x12x22 32xx--
(225)	9	370x325x8x22 26x295x3	----	----	----	370x325x8x22 26x295x3	406x356x12x25 25xx--
250	10	395x350x12x22 28x320x3	400x350x12x23 22x319x3	406x362x12x25 30x324x1,6	406x362x12x25 17xx--	395x350x12x22 28x320x3	432x381x12x25 35xx--
300	12	445x400x12x22 28x370x4	455x400x12x23 25x370x4	483x432x12x25 32x381x1,6	483x432x12x25 22xx--	445x400x12x22 28x370x4	489x438x16x25 38xx--
350	14	505x460x16x22 30x430x4	505x460x16x23 25x429x4	533x476x12x29 35x413x1,6	533x476x12x29 24xx--	505x460x16x22 30x430x4	553x495x16x29 41xx--
(375)	---	540x490x16x26 32x456x4	----	----	----	540x490x16x26 32x456x4	578x521x16x29 45xx--
400	16	565x515x16x26 32x482x4	585x515x16x28 25x480x4	597x540x16x29 37x470x1,6	597x540x16x29 26xx--	565x515x16x26 32x482x4	610x553x20x29 45xx--
450	18	615x565x20x26 32x532x4	----	635x578x16x32 40x533x1,6	635x578x16x32 27xx--	615x565x20x26 32x532x4	673x610x20x32 48xx--
500	20	670x620x20x26 34x585x4	670x620x20x28 27x582x4	699x635x20x32 43x584x1,6	698x635x20x32 29xx--	670x620x20x26 34x585x4	737x673x24x32 50.8xx--
600	24	780x725x20x30 36x685x5	780x725x20x31 30x682x5	813x749x20x35 48x692x1,6	813x749x20x35 32xx--	780x725x20x30 36x685x5	851x781x24x35 57xx--
700	28	895x840x24x30 40x800x5	895x840x24x31 33x794x5	927x864x28x35 52x794x1,6	927x864x28x35 33xx--	----	----
750	30		----	984x914x28x35 54x857x1,6	984x914x28x35 35xx--	----	----
800	32	1015x950x24x33 44x905x5	1015x950x24x34 35x901x5	1060x978x28x41 57x908x1,6	1060x978x28x41 39xx--		
900	36		1115x1050x28x34 38x1001x5	1168x1086x32x41 60x1022x1,6	1166x1085x32x41 41xx--		
1000	40		1230x1160x28x37 40x1112x5		1289x1200x36x41 41xx--		
1050	42		----		1346x1257x36x41 45xx--		

## METALURGICA GUADALUPE S.R.L.

Nos reservamos el derecho de introducir modificaciones que no alteren las normas, sin previo aviso.

49Libertad Nº 5719 B1653AOW VILLA BALLESTER - PROV. BS. AS. - REP. ARGENTINA

TEL: (54)(11) 4768-8038 y rotativas

E-mail: metalurgicaguadalupe@metguadalupe.com.ar

Web: www.siwo.com.ar